



REBUILT LIKE NEW

Fuji ANW-30T2



Build: 2003 Serial# 13890 Control: 18i-TA A2-6 Spindles

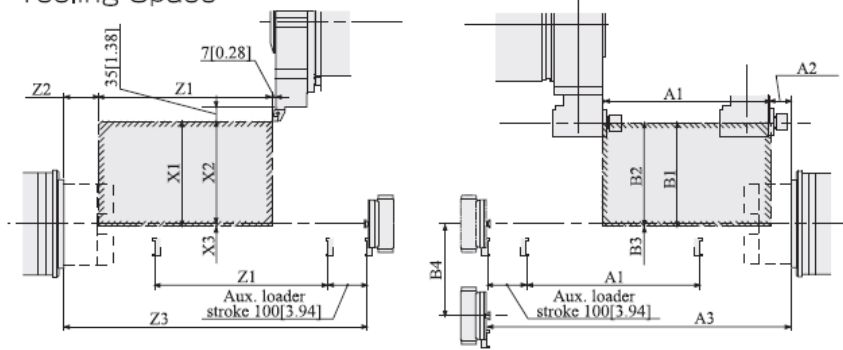
Price: \$ 165,000

Specifications for ANW-3000 4100

			ANW-3000 (R)	ANW-4100 (R)	
Machine Specifications	Recommended work size	mm [inch]	φ200×100 [φ7.8"×3.93"]	φ300×120 [φ11.8"×4.7"]	
	Spindle dia.	mm [inch]	φ100 [φ3.94"]	φ120 [φ4.72"]	
	Spindle bore dia.	mm [inch]	φ56 [φ2.20"]	φ67 [φ2.63"]	
	Spindle nose	mm [inch]	A2-6	A2-8	
	Spindle speeds	min ⁻¹	35~3500	30~3000	
	Spindle motor	kW [hp]	11/15 [15/20]	18.5/22 [25/30]	
	Slide stroke	X-axis	mm [inch]	220 [8.66"]	275 [10.8"]
		Z-axis	mm [inch]	295 [11.61"]	390 [15.4"]
	Feed motor	X-axis	kW [hp]	3 [4]	4 [5.4]
		Z-axis	kW [hp]	3 [4]	4 [5.4]
	Tooling			8-Pos,turret SM20	12-Pos,turret SM29
	CNC control			FANUC 180i-TB	FANUC 180i-TB
	Robot Specifications	Robot Model		L292-H	L292-B1
Carrying capacity		kg [lbs]	5+5 [11+11]	10+10 [22+22]	
Robot controller			MAX-SP1	MAX-SP1	
Auxiliary Loader			Standard (2)	Standard (2)	
Work Stocker			12Pallets	10Pallets	
Machine Size	Footprint	mm [inch]	3270×1890 [10'9" ×6'2"]	3270×2106 [11'9" ×6'11"]	
	Height	mm [inch]	2290 [7'6"]	2419 [7'11"]	
	Weight	kg [lbs]	7000 [15,400]lbs	8980 [19,800]lbs	

Specifications are subject to change without notice.

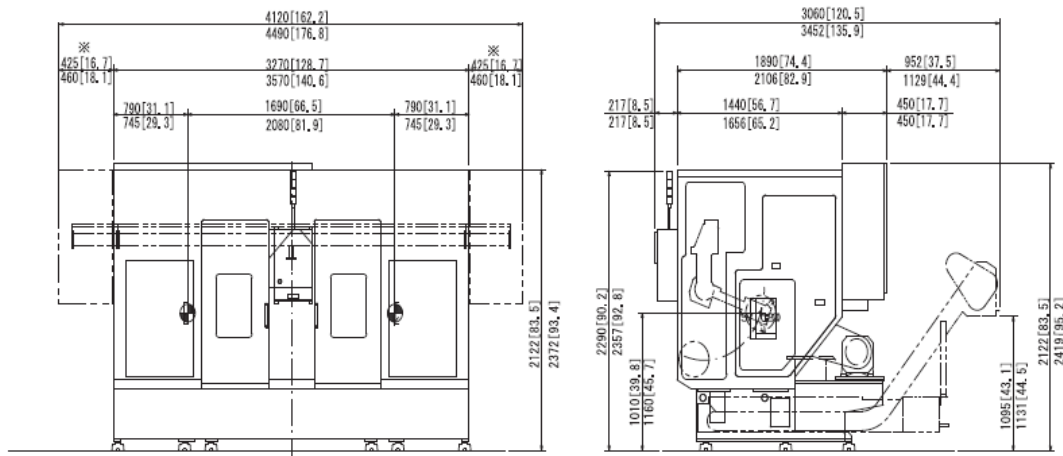
Tooling Space



	ANW3000	ANW4100
Z1	295 (st)	390 (st)
Z2	110	87,5
Z3	547,5.572,5.597,5	739
X1	220 (st)	275 (st)
X2	115	265
X3	5	10

	ANW3000R	ANW4100R
A1	295 (st)	390 (st)
A2	33,4	119,5
A3	547,5.572,5.597,5	739
B1	220 (st)	275 (st)
B2	120	267
B3	100	8
B4	0	100

Machine Dimensions



※ EXTEND TRAVEL BED

Dim upper-ANW3000
lower-ANW4100

List of repairs/new components

1. Spindle Motors rebuilt
2. New electric turrets
3. New lube blocks
4. Flush lube lines, replaced where needed
5. New Ballscrews and bearings for X and Z Axis for both sides
6. Left & Right Saddle rescraped and new fitted gibs
7. Wipers/scrapers
8. Completely cleaned and painted

Note: No chipconveyor included.

Contact Us: 423-887-5656; 865-388-6580 info@precision-tec.com

www.Precision-Tec.com